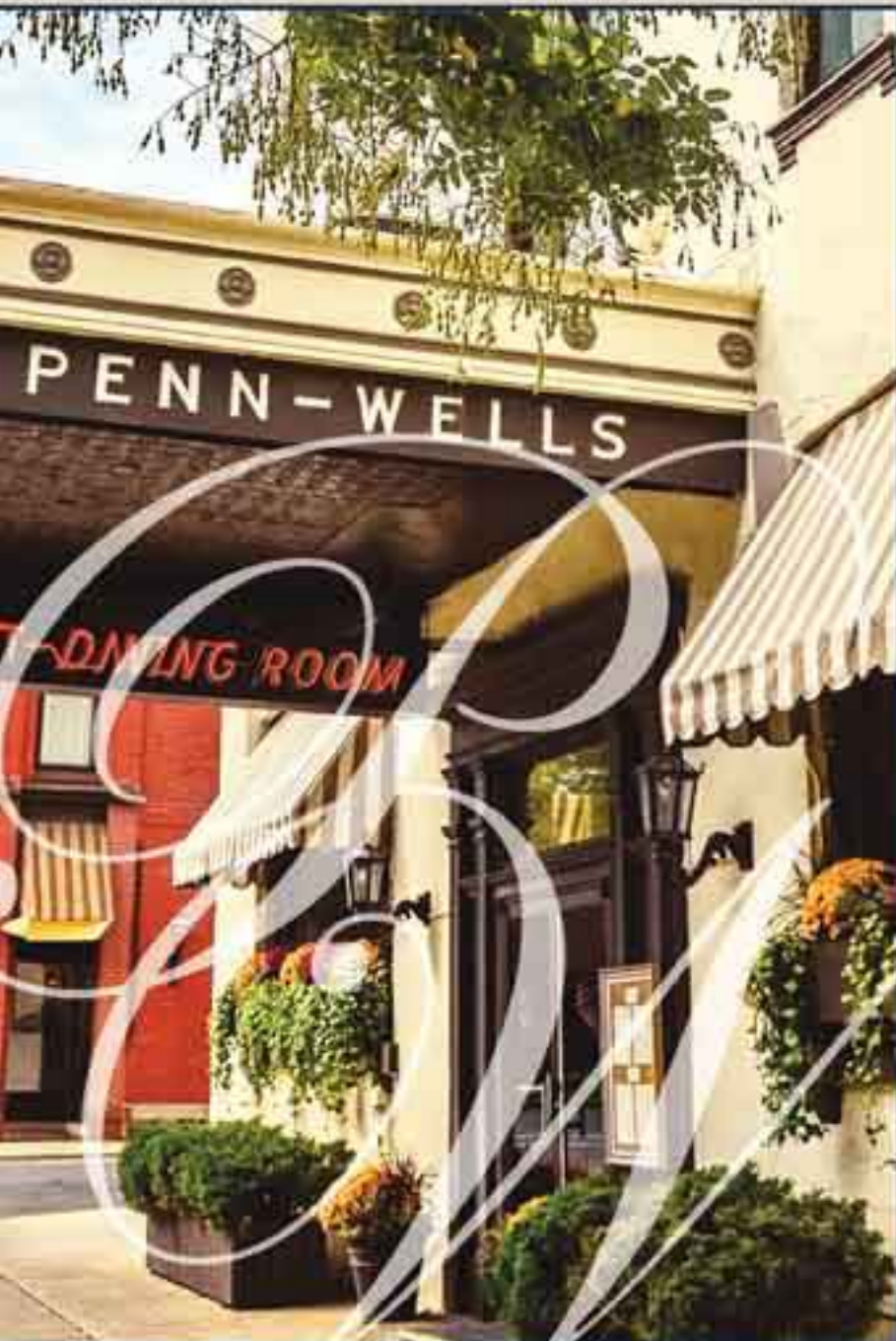


# PENN WELLS HOTEL LODGE

Wellsboro, PA

[www.pennwells.com](http://www.pennwells.com) 1.800.545.2446



Two Beautiful Locations & Styles -  
One Amazing Experience!



# PENN WELLS HOTEL

62 Main Street, Wellsboro, PA



*Built* in 1869, our historic Penn Wells Hotel is an iconic marker of downtown Wellsboro. The Hotel houses our full-service Mary Wells Dining Room and the Penn Wells Lounge, which together offer the best fine dining option in town.



The Mary Wells Room provides a one-of-a-kind space that carefully incorporates the history of Wellsboro and America, where private dining space is available for coach groups. The Hotel's prime location on Wellsboro's gas-lit Main Street makes it the perfect place to stop and allow travelers to refuel and stretch their legs before heading down the road to view the splendor of the Pennsylvania Grand Canyon. Sunday Brunch at the Penn Wells has long been a cherished tradition for visitors and locals, featuring live music every week.



Meal options for motorcoach groups are numerous. A number of preset buffets are available to choose from, featuring such items as carved turkey, roast beef or pork loin, chicken and seafood dishes, and many sides as well. Groups may also work with our in-house Director of Catering to create special menus to fit specific needs.



Wellsboro's gas-lit streets beckon you back to a simpler time in American history. A time when neighborhood stores focused on your personal needs, people smiled at strangers on the street and children played outside until the setting sun ushered them in for a family meal. Discover Wellsboro's friendly people, beautiful scenery and restorative atmosphere for yourself at the Penn Wells.



# PENN WELLS LODGE

4 Main Street, Wellsboro, PA



*The* newly renovated Lodge property is just one block down Main Street from the Hotel. Lodge guests are still within easy walking distance of all of the shops, boutiques and other entertainment in beautiful downtown Wellsboro.



The Penn Wells Lodge offers a number of room types, including 22 Standard Guest Rooms with two queen beds, 15 Standard Guest Rooms with two double beds, and 20 Economy Guest Rooms with two double beds. These rooms are all similar in size and decor, making them ideal for motorcoach groups who wish to stay overnight in the most convenient part of Wellsboro.



Guests receive complimentary hot breakfast daily at the Lodge and Monday through Saturday at the Hotel, free high-speed wireless internet and free use of our business center, fitness center and indoor pool facilities. Your stress will waft away as you sink into the bubbling jacuzzi or steamy locker room saunas.



Tioga County's claim to fame is the Pine Creek Gorge, also known as Pennsylvania's Grand Canyon, surrounded by 165,000 acres of the Tioga State Forest. Most of our large motorcoach groups enjoy experiencing the Canyon by horse-drawn covered wagon, but for more adventurous groups, outdoor activities such as horseback riding, biking, rafting, hiking, and much more are available.

The Penn Wells Hotel & Lodge are conveniently located within driving distance of a number of key New England and Mid-Atlantic urban areas, including Rochester, Buffalo, New York City, Philadelphia, Pittsburgh, Baltimore and Washington DC.



Wellsboro offers an endless supply of places to explore, shops to visit, outdoor activities, cultural entertainment, and more! Here are some of the most popular attractions.



### Covered Wagon Rides

Ole Covered Wagon Tours offers rides into the Pennsylvania Grand Canyon in a comfortable, stable, horse-drawn wagon.

### Small Town Charm

Wellsboro's gas-lit Main Street transports visitors back in time as they enjoy our shops and boutiques, including numerous antique stores and one of the country's last remaining independent department stores.

### Tioga Central Railroad

This passenger train is a favorite attraction among visitors, offering Site Seeing, Happy Hour and Dinner Excursions during the Summer and Fall.

## Next Stop

Wellsboro offers plenty to keep you busy over a multi-day stay, but it doesn't have to be the only stop on your trip. Our destination is a great fit for many itineraries.

### to the North

- ✿ Toronto, ON  
238 miles
- ✿ Corning, NY  
51 miles
- ✿ Buffalo, NY  
140 miles
- ✿ Finger Lakes Wine Region, NY  
60 miles



### to the West

- ✿ Cleveland, OH  
273 miles



Wellsboro, PA

Williamsport, PA  
51 miles



### to the East

- ✿ New York, NY  
239 miles



State College, PA  
90 miles



Harrisburg, PA  
136 miles



Lancaster, PA  
174 miles

✿ Pittsburgh, PA  
223 miles



Gettysburg, PA  
179 miles



Philadelphia, PA  
229 miles



- ### to the South
- ✿ Baltimore, MD  
215 miles
  - ✿ Washington D.C.  
255 miles